

# Detroit River International Wildlife Refuge

---

Presenter:  
Todd Weston





REFUGE GATEWAY

**Have you seen this  
symbol before?**



**What about  
this one?**





**U.S. Fish and Wildlife  
Service**





**568**  
Wildlife  
Refuges

**38**  
Wetland  
Management  
Districts

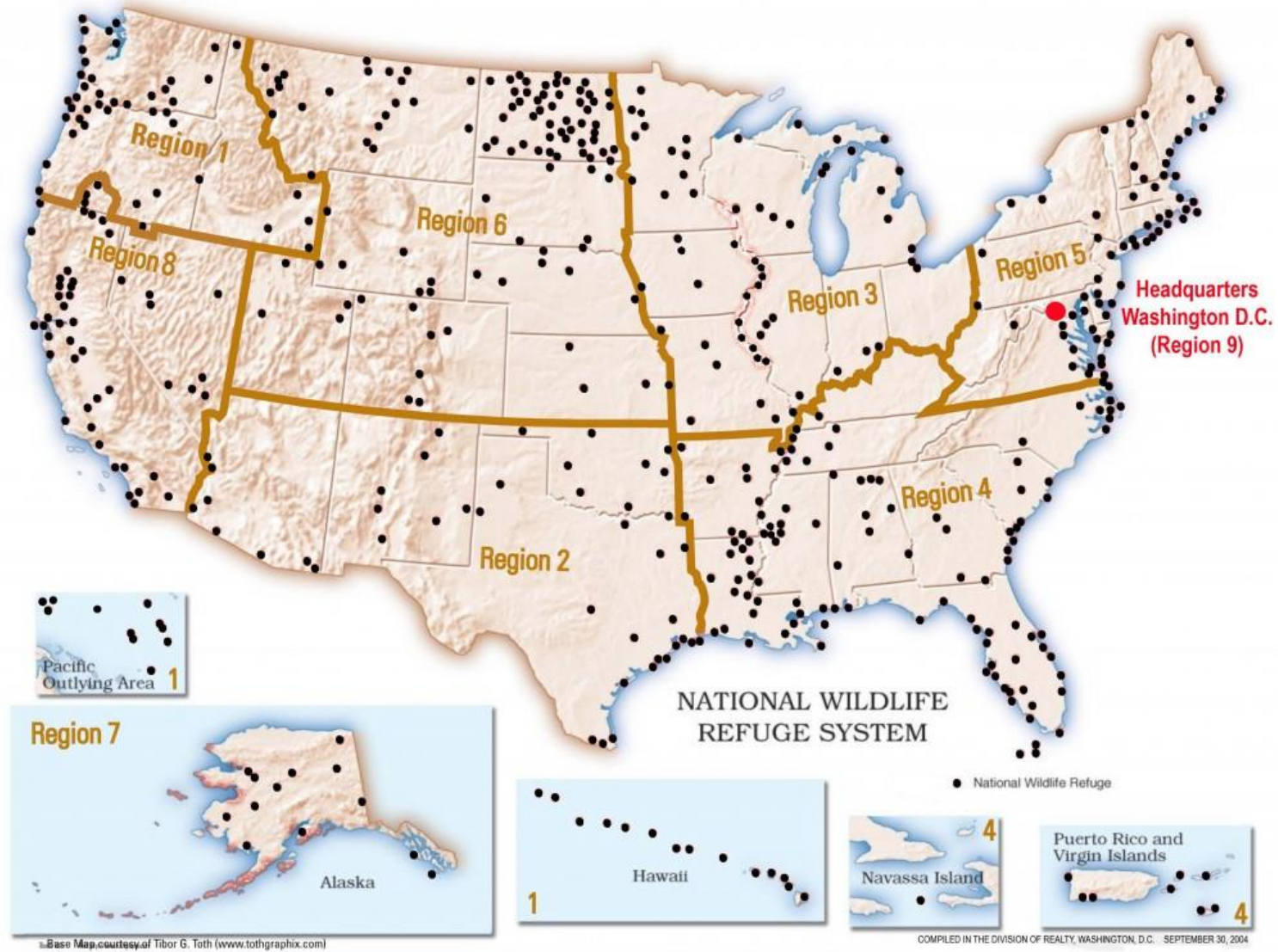
---

**in 50 States  
& 5 U.S.  
Territories**

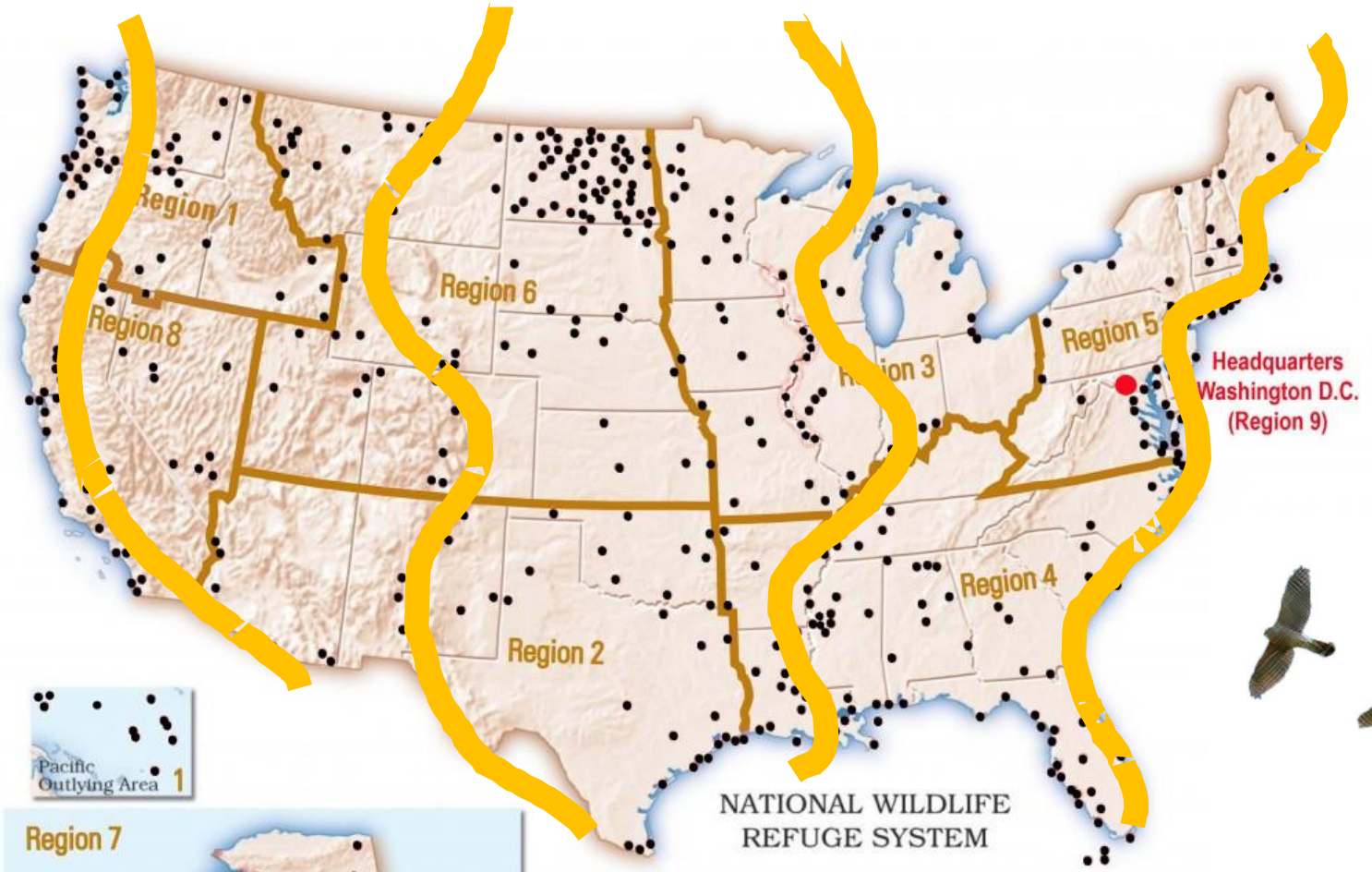
---

**850  
MILLION  
Land and  
Water Acres  
Managed**

Photo credit: USFWS Volunteer/Tom Kachelmeyer



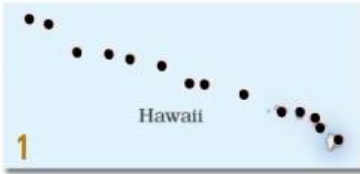
Wildlife First, Connecting people to nature and the BIG 6!



Headquarters  
Washington D.C.  
(Region 9)

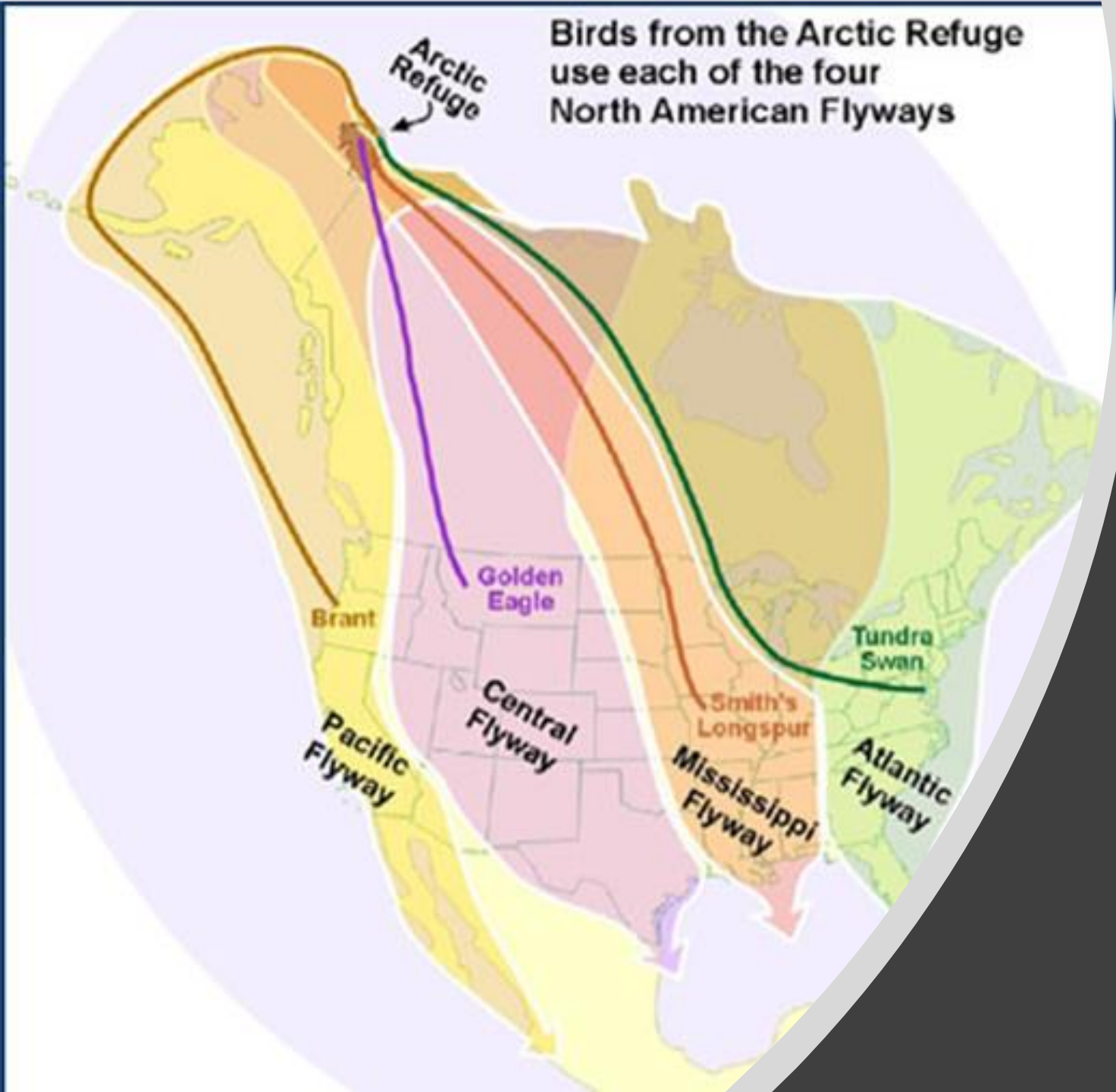
NATIONAL WILDLIFE  
REFUGE SYSTEM

● National Wildlife Refuge



Base Map courtesy of Tibor G. Toth (www.tothgraphix.com)

COMPILED IN THE DIVISION OF REALTY, WASHINGTON, D.C. SEPTEMBER 30, 2004



# Flyways

A flyway is a route regularly used by large numbers of migrating birds.



Refuges are Unique!



Photo credit: USFWS Volunteer/Tom Kachelmeyer

# Is there NATURE here?!?



Photo by M. Sisinger



Photo by FWS/Tandem



# Refuge Units

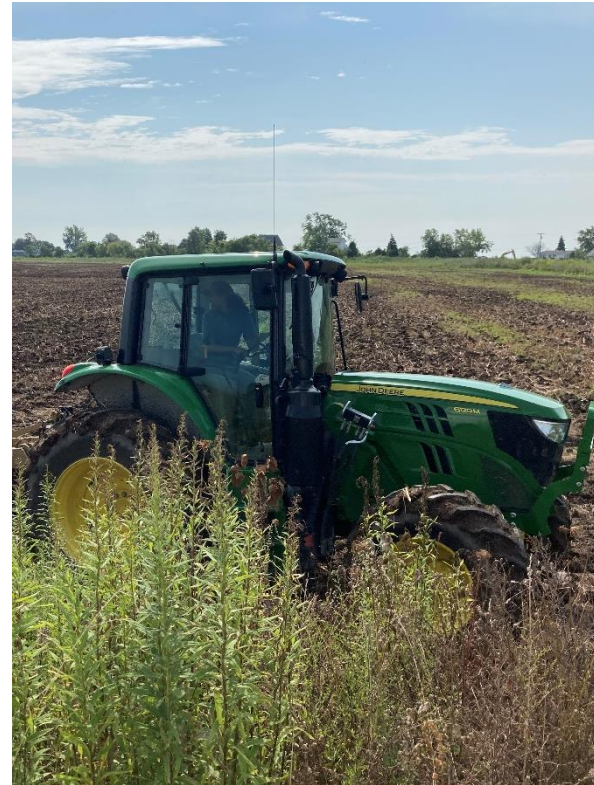
Over 6,200 acres of cooperatively managed units across 48 miles of Detroit River and Western Lake Erie Shorelines.





# DRIWR Programs

# Biology: Habitat Management, Invasive Species Control, Hawk Watch, and More!



# Visitor Services: Environmental Education, Public Programming, Volunteer Coordination



Maintenance:  
Nearly everything else





# International Wildlife Refuge Alliance

- An independent, nonprofit organization dedicated to supporting the mission and purposes of the DRIWR
- **Mission Statement:** Support the first international wildlife refuge in North America by working through partnerships to protect, conserve, and manage the Refuge's wildlife and habitats; and to create exceptional conservation, recreational, and educational experiences to develop the next generation of conservation stewards.





# Visit the Refuge!

**Come see what  
DRIWR has to offer!**

# Humbug!

Wetland of International  
Importance!

Last undeveloped mile!

Saved from development!



Photo by Jerry Jourdan





# Humbug Marsh

- Orange Trail (1/4 mile)
- Green Trail (2.5 miles)
- Educational Shelter
- Two observations desks
- Human size Eagle nest
- Boardwalk





# Refuge Gateway

**Now open!**

Thursday - Sunday

10am - 4pm



# Visitor Center

- Exhibit Hall
- Observation Room
- Nature Store
- Free Equipment Borrowing











# Nature Playscape



**Speaking of  
Wildlife  
Photography...**

Photo by Michael Sisinger



Photo by Mike Grosso



Photo by Michael Sisinger



Photo by Jerry Jourdan



Photo by Jake Bonello





Photo by Mike Grosso



Photo by Jerry Jourdan



Photo by Jerry Jourdan



Photo by FWS/Tandem



Photo by Jerry Jourdan



Photo by Jake Bonello

